

UNIKON Firmware Update Guide

Contents:

[1-7: Updating a Champ Base](#)

[8: Troubleshooting](#)

Version 3.23 2026

Updating a Champ Base

Please make sure you have everything required, you will need the full club system consisting of the following:

- UNIKON power supply
- Clube to base cable
- Club to PC cables
- The club Champ base
- The ring marker
- Security fob (required to update pocket clocks at the end if in club mode)
- A laptop or PC



1. Connect the ring marker to the laptop—please note you will not need to plug the base in at this point.



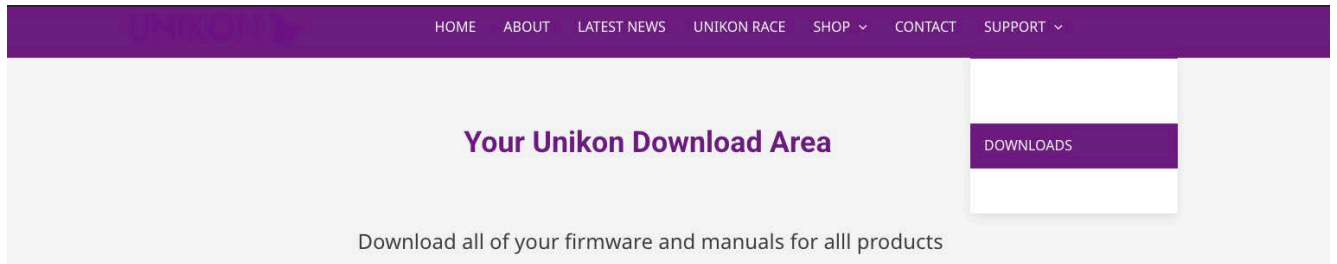
The USB lead will need to be plugged into the laptop.

2. Power up the ring marker ONLY - no base connected at this point.

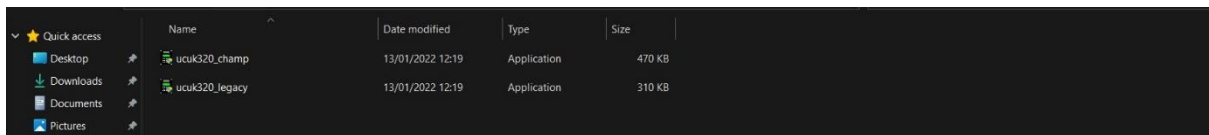


3. Wait for the LEDs to flash up as normal, you should see the orange always on and the red/green flashing.

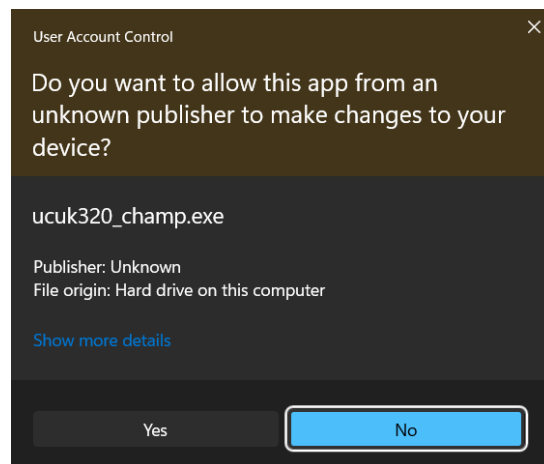
4. Go to <https://www.pigeonelectronic.co.uk/downloads/> and download the 3.23 firmware files.



5. Find the files on your computer and select the appropriate file for the update. For champ please use the file "ucuk323_champ"

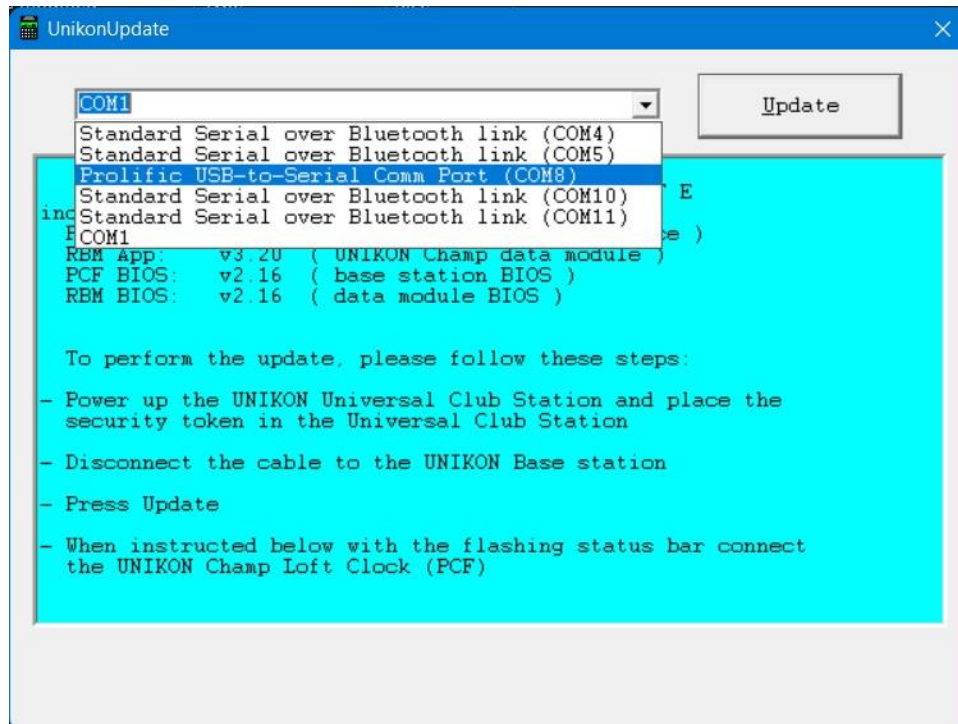


You may see a security prompt click Yes

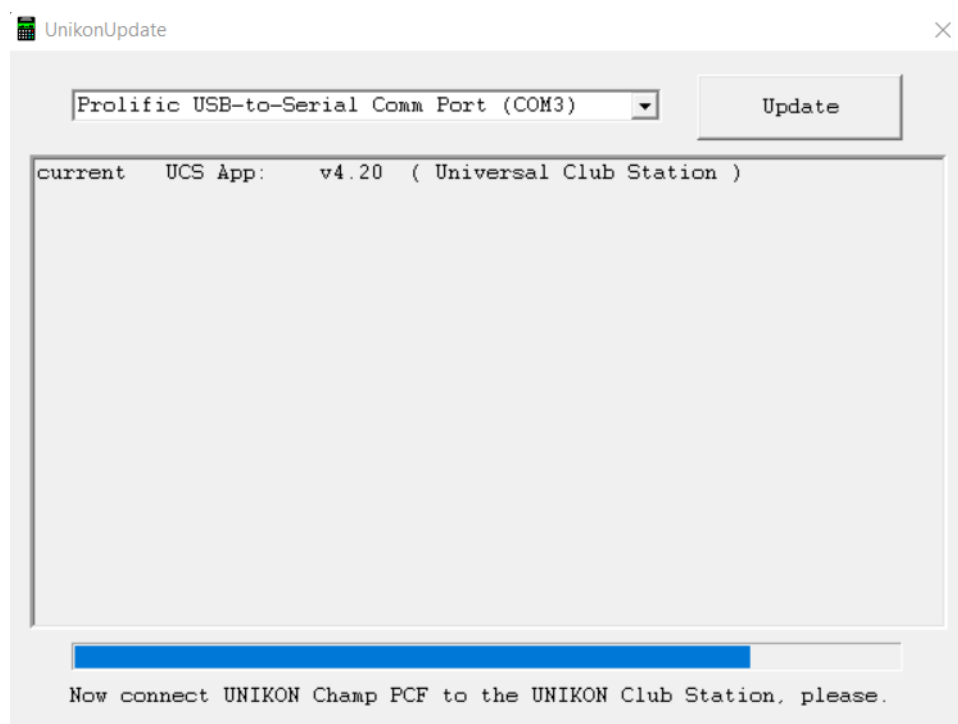


- Once open select the correct com port usually named 'Prolific USB-to-Serial Comm Port'.

Please be aware, if you do not select the correct port, the firmware update WILL NOT work.



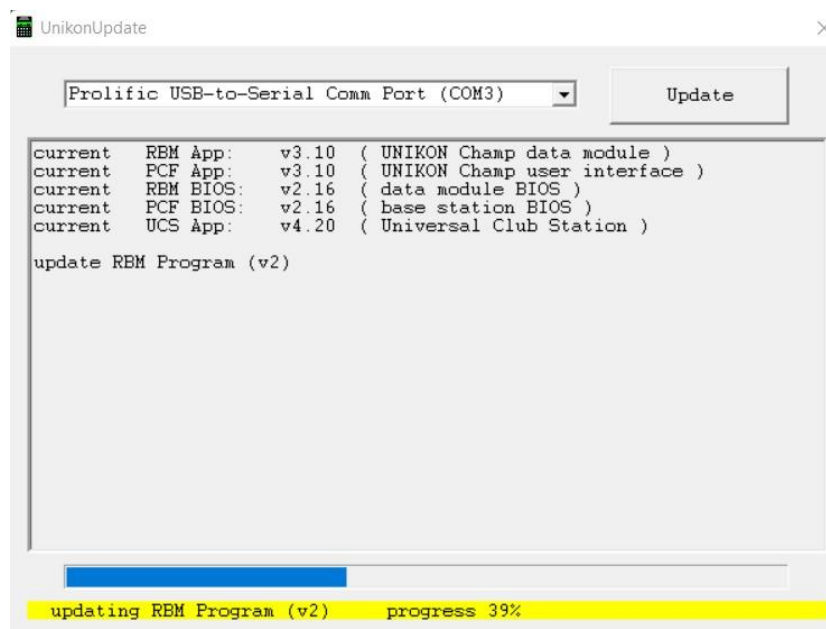
- Click update and follow the prompt on the screen, if the UCS is seen it will ask you to connect the base.



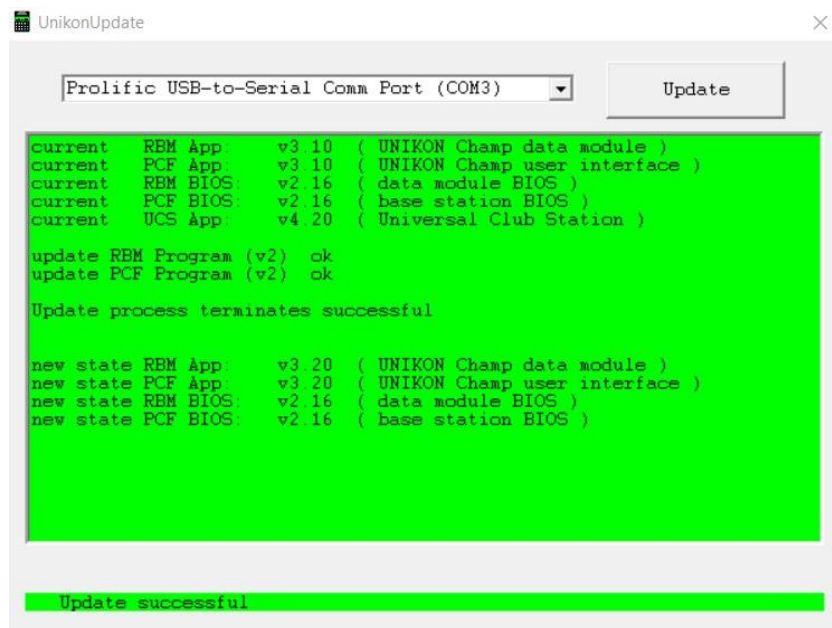
8. Connect the champ base to the ring marker.



The update should then start and show progress on both the base and the updater. **DO NOT UNPLUG ANYTHING AT THIS POINT!**



9. Wait for the update to finish and show a green background before unplugging anything.



10. From here you can set up the club system as normal and drop in the pocket clocks to update them to 3.2 you will need your security fob if updating via the club system.





Troubleshooting

If the update shows any connection errors.

If you are seeing errors when trying to update suggesting a connection error please try the following.

1. Double check all your cables are correctly and securely plugged in.
2. Restart your computer and power cycle any of the equipment.
3. Try running the updater again.

If you are still seeing connection problems, please check to ensure you are able to sync a pocket clock through UNIKON manager as following the club syncing process. This is a good way to test that the club system is talking to the laptop.

If none of the above works, please go to our website and download the USB to serial driver in the downloads section and follow the steps below.

1. Run the USB to serial driver on the computer and follow the install steps.
2. RESTART your computer.
3. Follow the steps at the top of this page.

If you are still having connection issues please email _____
unikon@pigeonelectronic.co.uk for further assistance.

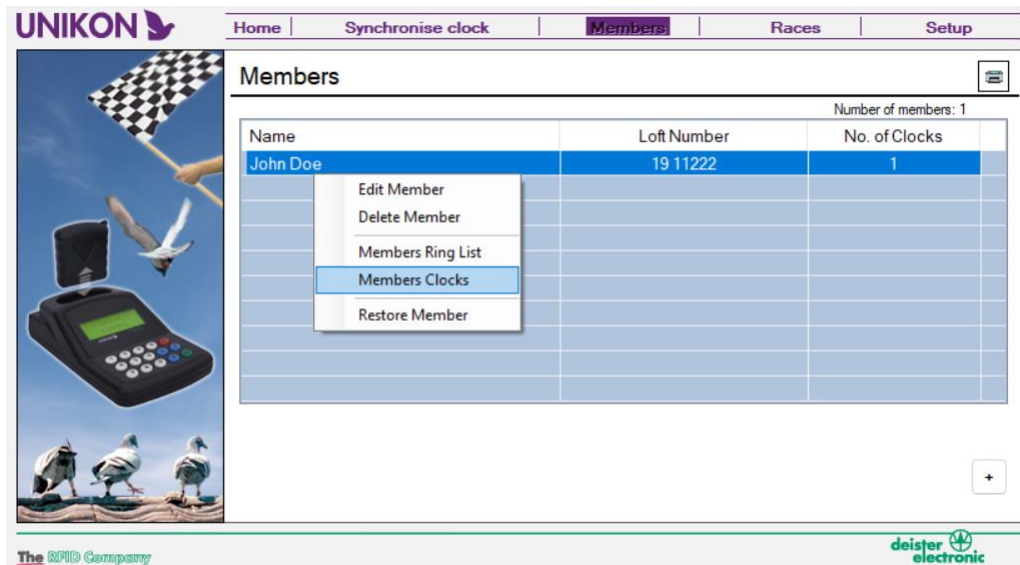
Checking pocket clocks have been updated

If you are unsure if a pocket clock has been updated you can always check after the clock has been synced in UNIKON manager, it will show in the members clock list their current version of firmware AFTER it has been synchronised.

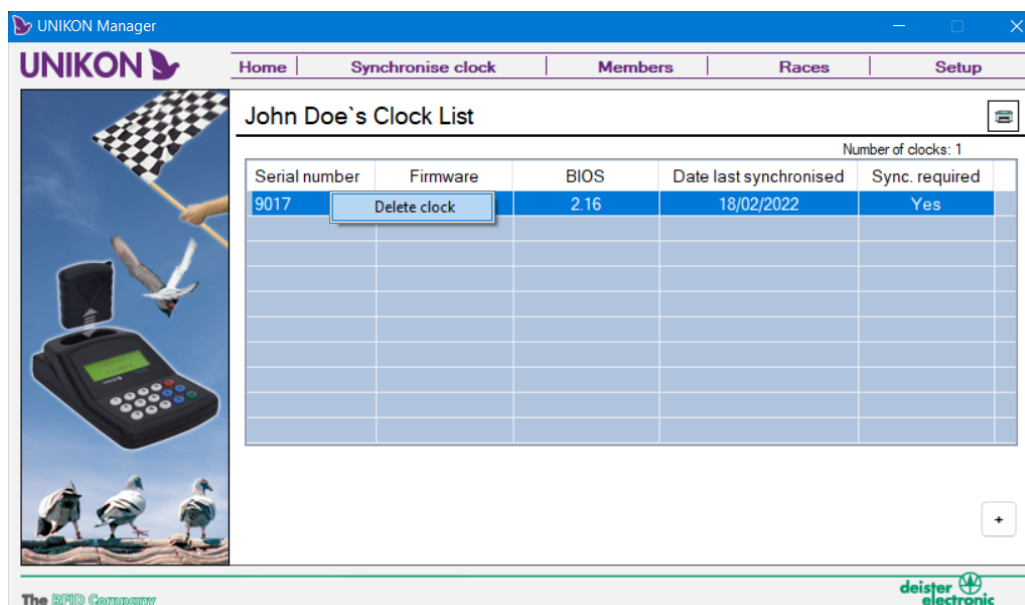
If your ring years have changed to 2030

There may be some occasions where the ring numbers change to 2030 onwards on all rings, if this is the case, **do not** sync the clock with the UNIKON manager and follow the below steps.

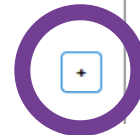
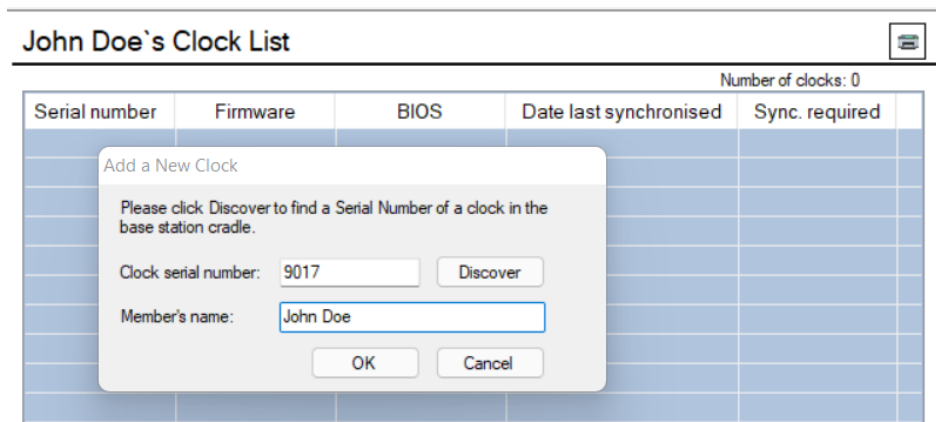
1. Open the UNIKON manager and find the members list. Right click on the members name and click 'Members Clocks'.



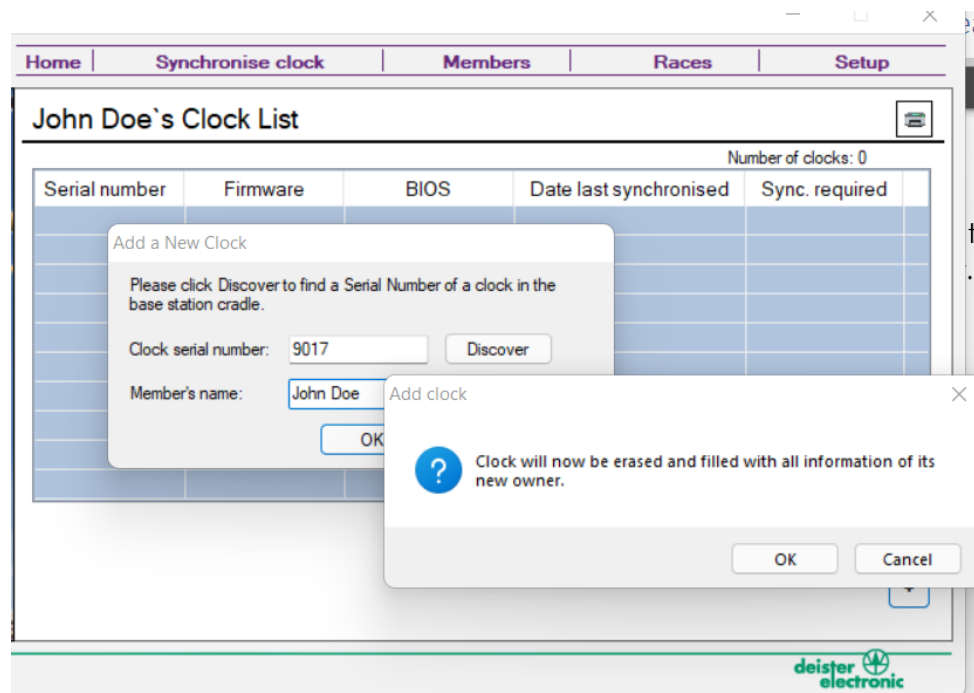
2. In the members clock list, you need to right click on the pocket clock serial and click delete. This will remove the clock from the list. Please ensure the serial number matches with the pocket clock.



3. Click the little + icon in the bottom right corner and in the new box opened click discover to bring up the serial number. And click OK.



4. You will then be prompted with the below, please click 'OK'. The manager will then send all the data to the clock.



This is then complete – please check the assignments list to ensure your ring years are correct.